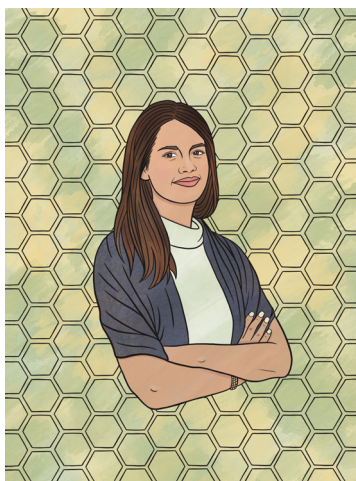




SAN DIEGO STATE UNIVERSITY  
Women in Engineering



# WE STEM ROLE MODELS



In collaboration with:



[www.engineering.sdsu.edu/about/we\\_program.aspx](http://www.engineering.sdsu.edu/about/we_program.aspx)  
[www.engineering.sdsu.edu/explore/femineer\\_program.aspx](http://www.engineering.sdsu.edu/explore/femineer_program.aspx)  
[www.kristinhardydesign.com](http://www.kristinhardydesign.com)





## Dr. Elisa Torresani

**WHO:** Assistant Professor,  
SDSU Mechanical Engineering

**EDUCATION:**  
University of Trento (Italy), B.S., M.S and Ph.D.

**YEAR STARTED WORKING AT SDSU:** 2020

**FAVORITE COLOR:** Blue

**BEST ADVICE:** Always double check your results.





## Dr. Junfei Xie

**WHO:** Assistant Professor,  
SDSU Electrical and Computer Engineering

**EDUCATION:**  
University of North Texas  
MS in Electrical Engineering  
Ph.D. in Computer Science and Engineering

**YEAR STARTED WORKING AT SDSU:** 2019

**FAVORITE COLOR:** White

**BEST ADVICE:** Success and opportunity are only  
given to those people who are well-prepared!





**Women in Engineering**



## Dr. Zahra Nili Ahmadabadi

**WHO:** Assistant Professor, SDSU Mechanical Engineering **YEAR STARTED WORKING AT SDSU:** 2020

**EDUCATION:**

Ph.D. in Mechanical Engineering, Université du Québec (École de technologie supérieure); M.Sc. in Mechanical Engineering, Tarbiat Modares University; B.Sc. in Mechanical Engineering, University of Tehran

**FAVORITE COLOR:** Red / Blue

**BEST ADVICE:** Be always ready for change and never stop learning new skills to be able to adapt to rapidly changing job market.