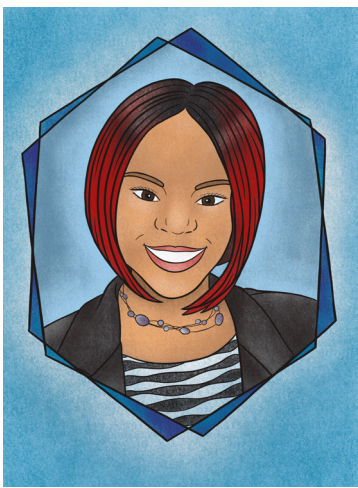


Women in Engineering

POSTER COLLECTION

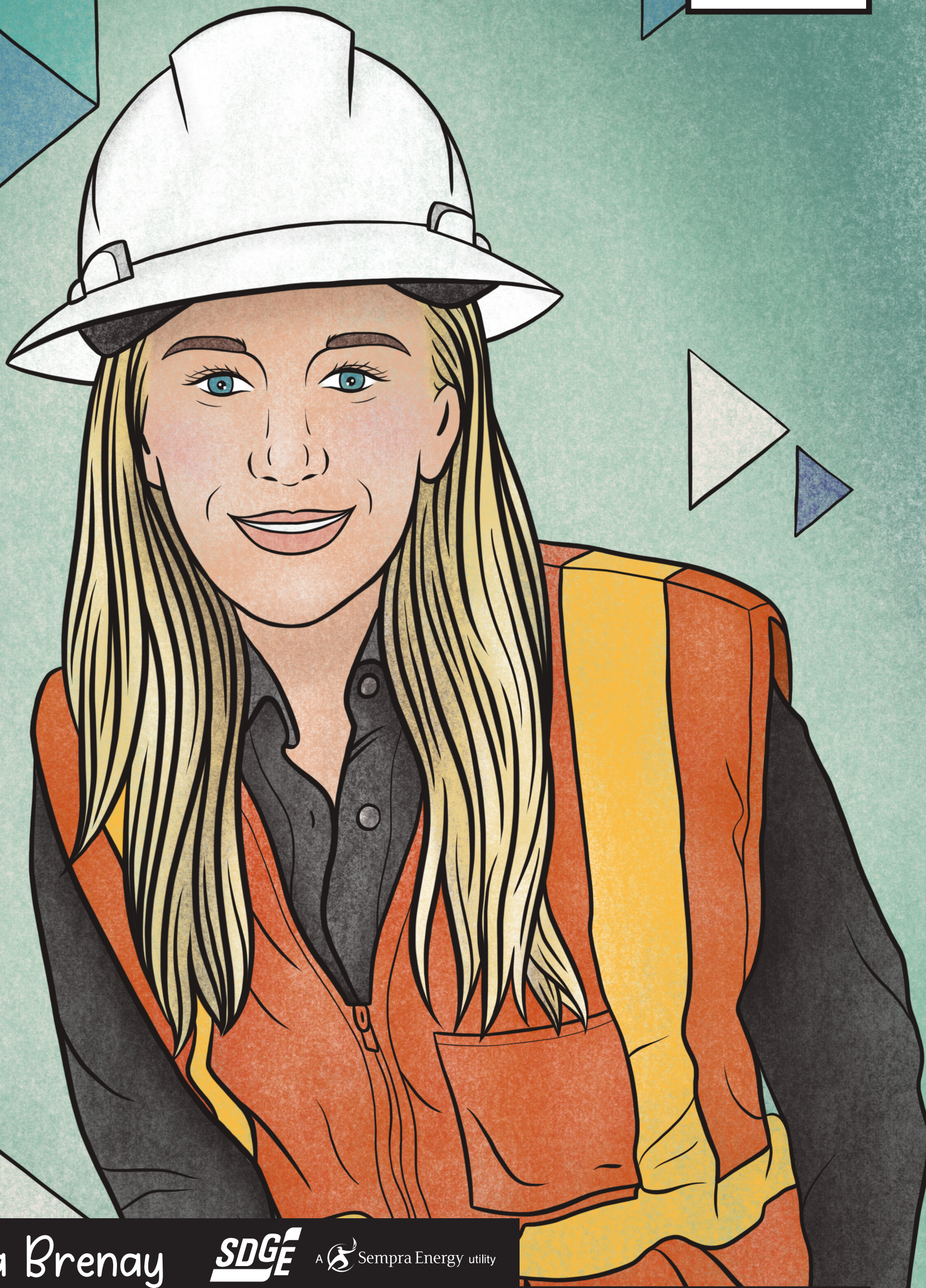
Volume 2



In collaboration with:



www.sdstemecosystem.org
www.engineering.sdsu.edu/explore/femineer_program.aspx
www.kristinhardydesign.com



Giovanna Brenay



A  Sempra Energy utility

WHO: B.S. Electrical Engineering; SDSU Alumna;
District Engineer

HOBBIES: Hiking, swimming, baking, reading, and
Community Improvements Projects Volunteer

FAVORITE COLOR: Teal

BEST PART ABOUT BEING AN ENGINEER: Helping others.
I have the satisfaction of knowing decisions I make
will have a positive impact on our community.

BEST ADVICE: Embrace what makes you unique. Early on
I worried about not fitting society's "mold" of what an
engineer should be. Once I let go, I thrived in my career.



Claudia Garcia

NAV  AIR

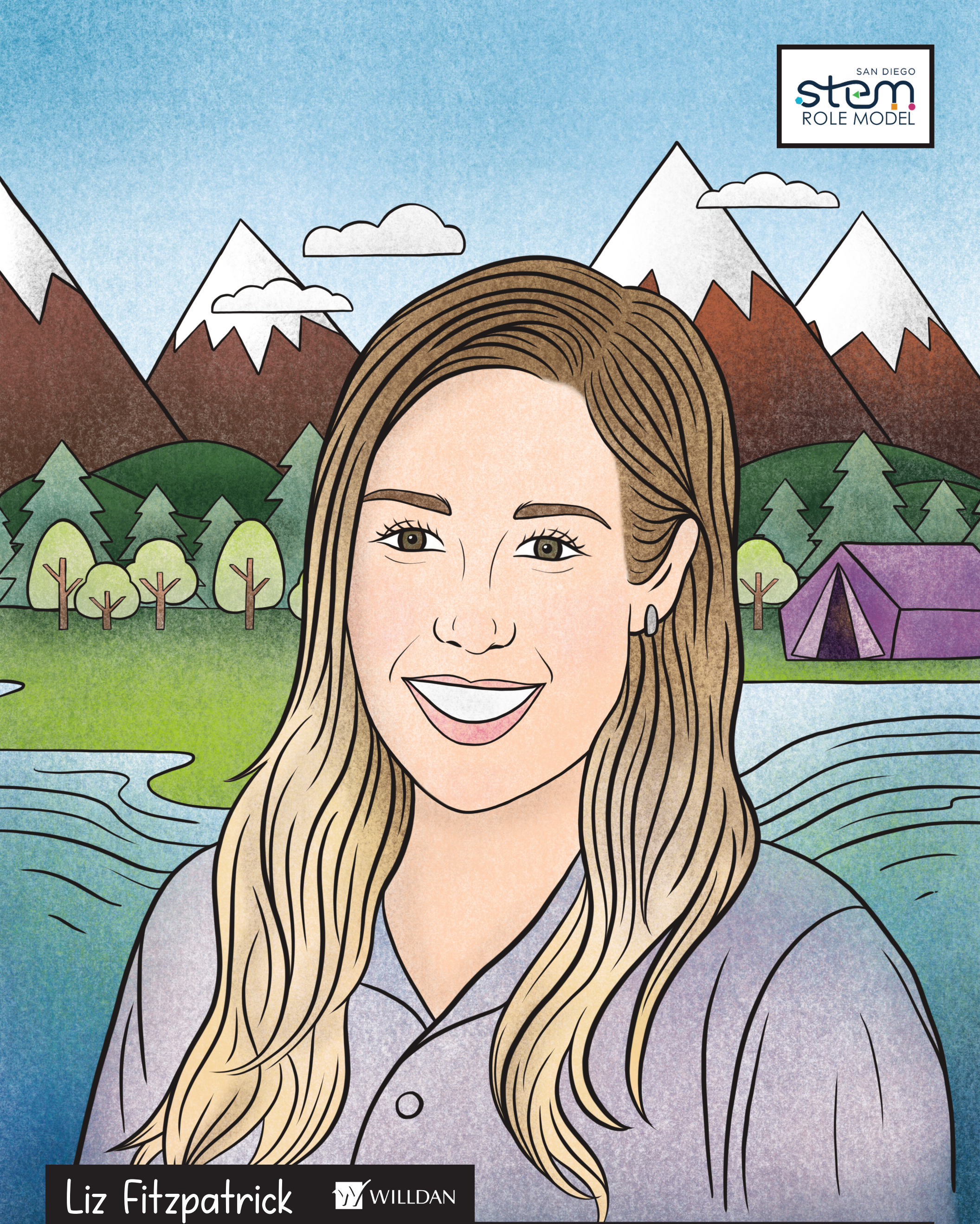
WHO: B.S. Electrical Engineering; SDSU Alumna; Fleet Support Team, Engineering; Operations, Planning & Support Director; STEM and Summer Internships Director

HOBBIES: Hiking, home do-it yourself projects

FAVORITE COLOR: Orange

BEST PART ABOUT BEING AN ENGINEER: I enjoy working with a team of creative people and brainstorming how to solve problems. Once you fix the problem, it feels AWESOME!

BEST ADVICE: Do not fear change. Change helps you grow. Surround yourself with smart and optimistic people and all will be okay.



Liz Fitzpatrick



WHO: B.S. Environmental Engineering;
Deputy Program Manager

HOBBIES: Hiking, camping, volleyball, reading

FAVORITE COLOR: Green

BEST PART ABOUT BEING AN ENGINEER: Designing systems
to make communities healthier places to live.

BEST ADVICE: If you don't know what to do in your
education or career pathway, do something that
follows your "why" or your passion and you will find
a fulfilling pathway even if it's a squiggly one.